



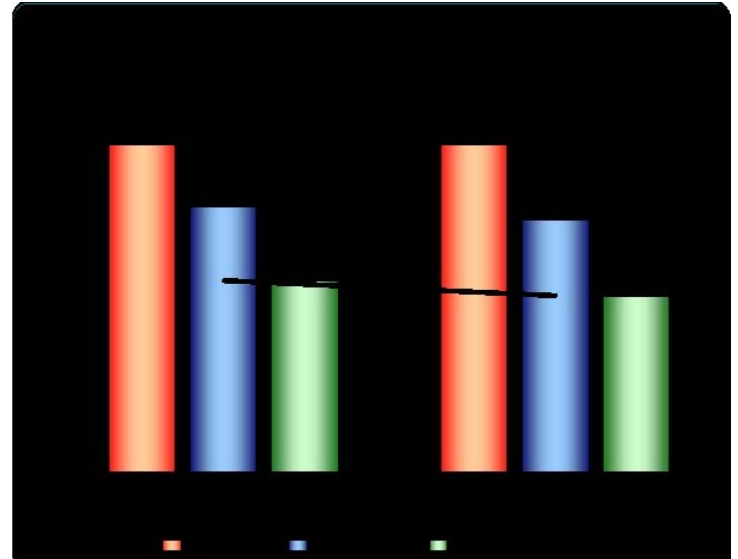
# RESULTS STORY

## COMPLETING THE TECHNICAL LIMIT



*Real Results!*

**20% Below Target, 44% above AFE**



Kevin Renfro's completion team of Jack Burman, Gennifer Kelly and Dan Shipper are using Completing the Technical Limit (CTL) processes during the planning phase to challenge existing practices and to get agreement for target times at least 20% under AFE.

REACH Group performance coaches used CTL during the execution phase on the Millennium to promote safety, eliminate Non-Productive Time (NPT), uncover Invisible Lost Time (ILT), savings opportunities and submit Lessons Learned for validation and 'closing out' for implementation. This facilitation has allowed the team to record *Actual Time that beat the Target Time by 20%, and an impressive 44% under AFE.*

What is perhaps the most exciting about these two complex completions is the fact that the Target Time on the second well was reduced by incorporating the learning's from the first well. The team was confident enough to utilize their rapid learning to continue the challenge process beyond the initial planning workshop. They recorded an additional 8% recovery in Actual Time that kept the trend improving.

With a rate of intangible costs for completion at \$18,000 per hour, the Lessons Learned value was \$533,400. ROI (savings to REACH fee) was 7.35:1 for Lessons Learned alone. The cost savings for these two wells were \$6,937,099 under the target and \$17,508,951 below AFE.

***"The REACH coaches are handling all the details of the Lessons Learned gathering issue. This takes a huge burden off us, the engineers."*** - Gennifer Kelley, Anadarko Staff Completions Engineer

***"It has been a pleasure to work with the REACH coaches, Karl and Heath. They are professional, knowledgeable and capable. No job is too big or too small for them to handle. They are great contributors to the success of the project."*** - Dan Shipper, Contract Completions Engineer

## Deepwater Millennium

